

SRCP 750 CONCRETE ELECTRONIC SENSOR PAVER



- ✚ High precision cylinder finisher for concrete slabs such as Streets, Parking, Factory floors, Bridges, Airports, Tennis Courts, Canal, Reservoir etc.
- ✚ It can finish a width from 3.5 mtrs. To 20 mtrs. (It is a custom design paver)
- ✚ Machine can finish a width up to 150 Sq. Meter/hour at suitable site condition.
- ✚ The special under carriage consists of a spreader extra length auger to spread the concrete to level, the finishing cylinder to compact and finish the concrete to the grade.
- ✚ Finishing roll bracket is equipped with vibrator.
- ✚ Heavy Duty Track Chain, Heavy Duty Hydraulic Jacks & Moba (Germany) Make Electronic Sensor.



SRCP 750 CONCRETE ELECTRONIC SENSOR PAVER

TECHNICAL SPECIFICATION

PRIME MOVER: With Needle Vibrator	15HP 1440-RPM for Fix Console. 20HP 1440-RPM for under carriage
PRIME MOVER: Without Needle Vibrator	15HP 1440-RPM for Fix Console. 7.5HP 1440-RPM for under carriage
Fix Console	This hydraulic console controls the forward and reverse movement of the under carriage and the travel track chain by means of hydraulic motors.
Under Carriage/Finisher Assembly	Under Carriage accommodates the most critical components of the machine. It encompasses the vibratory finishing drum, Spreader Auger. Optional:- Hydraulic Needle Vibrators The Under Carriage travels with a speed 30 meters/ minute.
Vibratory Finishing Drum	The finishing drum is 4 feet length and 10.7 inches (272mm) in diameter. It rotates at a speed of 195 rpm. The finishing drum vibrates at 1500 vpm. This drum is precisely balance with the help of computerized balancing system to obtain quality finish.
Spreader Auger	The Auger is welded with hard faced welding to obtain maximum life. The auger is designed to work in the direction of travel movement of the machine.
Traction System	Heavy duty hydraulically driven Track Chain.
Sensor Gradation	Moba (Germany) Make Electronic Sensor system to obtain maximum accuracy.
Jack System	Heavy duty hydraulic jack system.
Hydraulic Oil Capacities	Fix console: 110 Liters. Under carriage: 140 Liters.



SRCP 750 CONCRETE ELECTRONIC SENSOR PAVER



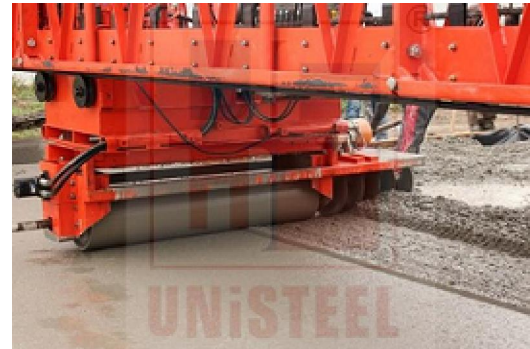
BACK VIEW AFTER FINISHING



TRACK CHAIN



VIEW AFTER FINISHING



VIEW ON WORKING



MOBA GRADE & STAIRING SENSOR



HEAVY DUTY HYDRAULIC JACK